

What's available at each hub?

| Town | Hub location | Reception | Bookable desks | Private meeting room | Open seating areas | Printer/scanner | Confidential waste/shredding | Kitchen facilities | Toilets | Showers/changing/lockers | Interview/1:1 room |
|------------|----------------------------------|--|--|--|---|------------------------|---|---|-----------------------|---|--|
| Coatbridge | Community Centre @ St Andrews HS | Yes reception for sign in | 10 desks Bookable on the app | X 2 up to 8 persons Bookable on outlook c/w screen with HDMI link | 2 booths 2 tub chairs | | | Kitchen with tables and chairs for up to 10 persons | Ground & 1st Floor | Accessible toilet on first floor for changing | 2 x small interview/meeting rooms on the first floor Bookable on outlook c/w screens with HDMI link |
| Coatbridge | Riverbank Community Hub | Yes, main school reception for sign in | Shared staff and partnership zone with a mix of booths, tables & chairs and low seating. | Large Community Room which can be split to form 2 rooms for up to 12 persons each 1x smart board with HDMI link | Shared staff and partnership zone 2 booths 5 tables/chairs Low seating area NOTE This space is at its busiest between 1130 and 1330 | Not yet | Within the main reception area used by clerical staff | In the shared staff and partner zone | Ground & Lower Levels | Ground & Lower Levels. (Lower level changing/showers outwith school hours) | 2 small meeting rooms |
| Coatbridge | Buchanan Centre | Yes reception for sign in | Coming soon | Coming soon | In library | Available ground floor | Ground floor | Kitchen area ground floor | Ground floor | | Coming soon |

Current opening hours

Coatbridge CC: Monday to Friday 08:45 to 21:45

Coatbridge Buchanan Centre: 08:00 to 18:00

Coatbridge Riverbank Community Hub 08:30-16:45* Monday to Thursday,
Friday 08:30-16:15* **TBC**

**note due to current staffing arrangements there is no access to the staff and partnership zone beyond 4pm, all staff using the hub are asked to vacate by the times shown above (unless another arrangement is in place)*

More information on myNL

Coatbridge CC – [Hub at Coatbridge CC- MyNL](#)

Coatbridge Buchanan Centre - [Hub at Buchanan Centre- MyNL](#)

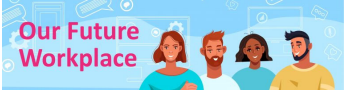
Coatbridge Riverbank Community Hub – [Riverbank Community Hub – My NL](#)

Booking a desk - <https://mynl.co.uk/knowledge-base/workspace-booking-application/>

Booking a meeting room:

- For Riverbank meeting rooms please email school&facilitybookings@northlan.gov.uk
- All other hub meeting rooms can be booked through MS Outlook
- Staff from partner agencies please email operatingmodeldeliveryteam@northlan.gov.uk

To book other community facilities for use, not listed here, please contact the [Community Facilities team](#).



What's available at each hub?

| Town | Hub location | Reception | Bookable desks | Private meeting room | Open seating area(s) | Printer/scanner | Confidential waste/shredding | Kitchen facilities | Toilets | Showers/changing/lockers | Interview /1:1 room |
|-------------------|---------------------------------------|--|---|--|--|---|---|---|-----------------------|---|---|
| Cumbernauld | Broadwood Stadium, Hub on first floor | No, pin code entry. Any issues please report to the sports centre main reception | 13 desks Bookable on the app | 1 open meeting room area in the main hub for up to 6 persons 1 private meeting room up to 6 persons c/w screen with HDMI link Bookable on outlook. | 2 booths 1 table with 3 seats. 2x touchdown spaces | Yes | Yes | Tea prep area . Café in the sports centre reception. | Adjacent to hub suite | Available in the sports centre. Venue staff would provide access if required. | 1 open meeting area 1 private meeting room |
| Cumbernauld | Cumbernauld Theatre | No, NLC venue staff on site | No Bookable Desks at this location | X 1 up to 6 persons Bookable on Outlook | First floor none Ground floor Café with open plan seating | First floor Within theatre office | First floor Within theatre office | Café and open plan seating up to 60 persons | Ground & Upper Floors | Accessible toilets for changing | Only the meeting room |
| Northern Corridor | Chryston Community Hub | Yes, main school reception for sign in | Shared staff and partnership zone with a mix of booths, tables & chairs and low seating | 2 small meeting rooms up to 4 persons 1 conference room up to 12 persons available to book from 0830 to 1645 Interactive Screen Available for presenting | Shared staff and partnership zone 2 booths Tables/chairs Low seating area Touchdown Area | Not Yet | No | In the shared staff and partner zone | Ground & First Floors | Ground & First Floors | 2x small meeting rooms |

Current opening hours

Broadwood: 08:45-17:00 Monday to Friday
 Chryston Community Hub: 08:30-16:45* Monday to Thursday, Friday 08:30-16:15* TBC
 Cumbernauld Theatre: Mon to Friday 9am to 5pm, Sat (in line with Theatre hours) 10am to 8pm

**note due to current staffing arrangements there is no access to the staff and partnership zone beyond 4pm, all staff using the hub are asked to vacate by the times shown above (unless another arrangement is in place)*

More information on myNL

Broadwood [Hub at Broadwood Stadium – My NL](#)
 Chryston Community Hub [Chryston Community Hub – My NL](#)
 Cumbernauld - [Hub at Cumbernauld Theatre/Cumbernauld HS- MyNL](#)
 Booking a desk - <https://mynl.co.uk/knowledge-base/workspace-booking-application/>

Booking a meeting room:

- For Chryston meeting rooms please email school&facilitybookings@northlan.gov.uk
- All other hub meeting rooms can be booked through MS Outlook
- Staff from partner agencies please email operatingmodeldeliveryteam@northlan.gov.uk

To book other community facilities for use, not listed here, please contact the [Community Facilities team](#).



What's available at each hub?

| Town | Hub location | Reception | Bookable desks | Private meeting room | Open seating area(s) | Printer/scanner | Confidential waste/shredding | Kitchen facilities | Toilets | Showers/changing/lockers | Interview /1:1 room |
|--------|--------------------------------------|--|--|--|---|-----------------|---|--------------------------------------|--|--|--|
| Shotts | Calderhead High School | Yes, main school reception for sign in | 6 desks Bookable on the app | Open plan meeting table for 6-8 – not bookable, first come first served. | 2 booths 2 tub chairs Open meeting area up to 8 | Available | Available | Tea prep area in hub | Accessible toilet next to the hub for changing | Accessible toilet for changing | No |
| Wishaw | Newmains & St Brigid's Community Hub | Yes, main school reception for sign in | Shared staff and Partnership zone with a mix of booths, tables & chairs and low seating. | 2 small meeting rooms for up to 4 persons 10:00 to 14:30 1 conference room for up to 12 persons available to book from 08:30 to 16:45 | Shared staff and partnership zone 2 booths 5 tables/chairs Low seating area NOTE This space is at its busiest between 11:30 and 13:30 | Not yet | Within the main reception area used by clerical staff | In the shared staff and partner zone | Accessible WC | Accessible changing facilities - access controlled via main hub reception. | 2x small Meeting rooms avail. 10:00 to 14:30 |
| | | | | | | | | | | | |

Current opening hours

Shotts: Mon-Thu 8:30am to 4:30pm, Friday 8:30am to 4pm
 Newmains & St Brigid's: 08:30-16:45* Monday to Thursday, Friday 08:30-16:15*

**note due to current staffing arrangements there is no access to the staff and partnership zone beyond 4pm, all staff using the hub are asked to vacate by the times shown above (unless another arrangement is in place)*

More information on myNL

Shotts - [Hub at Calderhead HS- MyNL](#)

Newmains & St Brigid's [Newmains & St Brigid's Community Hub – My NL](#)

Booking a desk - <https://mynl.co.uk/knowledge-base/workspace-booking-application/>

Booking a meeting room:

- For Newmains & St Brigid's Community Hub meeting rooms please email school&facilitybookings@northlan.gov.uk
- All other hub meeting rooms can be booked through MS Outlook
- Staff from partner agencies please email operatingmodeldeliveryteam@northlan.gov.uk

To book other community facilities for use, not listed here, please contact the [Community Facilities team](#).